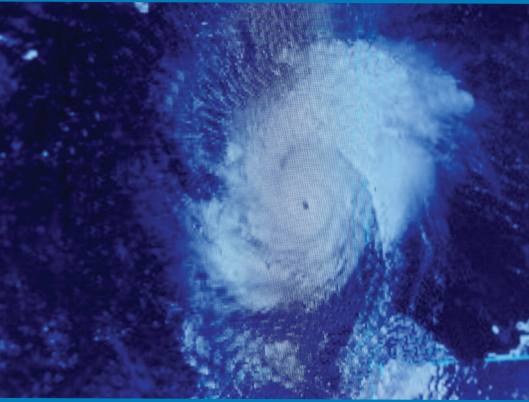


Hurricane Safety Tips



Before the Hurricane

- Update your phone number and e-mail address with your electric company so you can be served faster in the event of an outage.
- Purchase appliances with built-in surge protection or install surge protectors to help safeguard valuable electronic equipment, such as computers and home entertainment systems. Plug computers and other sensitive equipment into a separate, grounded circuit to isolate them from fluctuations caused when a major appliance restarts (such as your room air conditioner or refrigerator). Consider having a lightning arrester installed at your main circuit panel.
- Develop an emergency plan that addresses any special medical needs you or your family members have. Call your local emergency management office to discuss necessary arrangements.
- Know all evacuation routes if you live close to the coast.
- Have your Emergency Outage Kit stocked and readily available.

- Pay attention to local weather reports on the radio, television, or Internet.
- When a hurricane is predicted, stock up on groceries, water, medications, and any other necessities such as infant supplies to avoid the need for travel during the storm.
- If called to evacuate, do so immediately.

During the Hurricane

- Stay in a secure room and away from windows.
- Monitor weather bulletins on a battery-powered radio.
- Remain indoors. Stay inside even if the hurricane eye moves over your area because the storm will resume shortly.
- Turn off power to flood-prone basement appliances if it is safe to do so. However, if using an electrically operated sump pump, you should not turn off the power.
- If your power goes out, report your outage immediately to your local electric company. Don't rely on your neighbors to report your outage.

After the Hurricane

- Make sure the storm has completely passed before going outside.
- Stay away from downed power lines, flooded areas, and debris. Treat all fallen wires and anything touching them as though they are energized. Immediately report downed lines to your electric company.

If your power is out:

- Listen to the radio for further information and instructions.
- In hot weather, close drapes and blinds on the sunny side of your house, drink plenty of fluids, take your pets to a cool basement location, and go to an air-conditioned civic center, mall, or library if necessary to stay cool.
- If using a personal generator, please take all recommended precautions. Never use a generator inside your home, garage, crawl space, other enclosed areas, or anywhere exhaust fumes can enter into enclosed spaces. Fatal, odorless fumes can build up quickly and opening doors and windows or using fans will not prevent CO buildup in the home.
- Remain patient. Every electric company has a detailed plan for restoring electrical service after a power outage. Typically, one of the first steps a company takes—to prevent injuries and fires—is to make sure that power is no longer flowing through downed lines. Restoration then proceeds based on established priorities, which you can learn about on EEI's Web site, www.eei.org.

Source: www.Ready.gov, a Web site operated by the U.S. Department of Homeland Security (DHS) and the U.S. Federal Emergency Management Agency (FEMA)